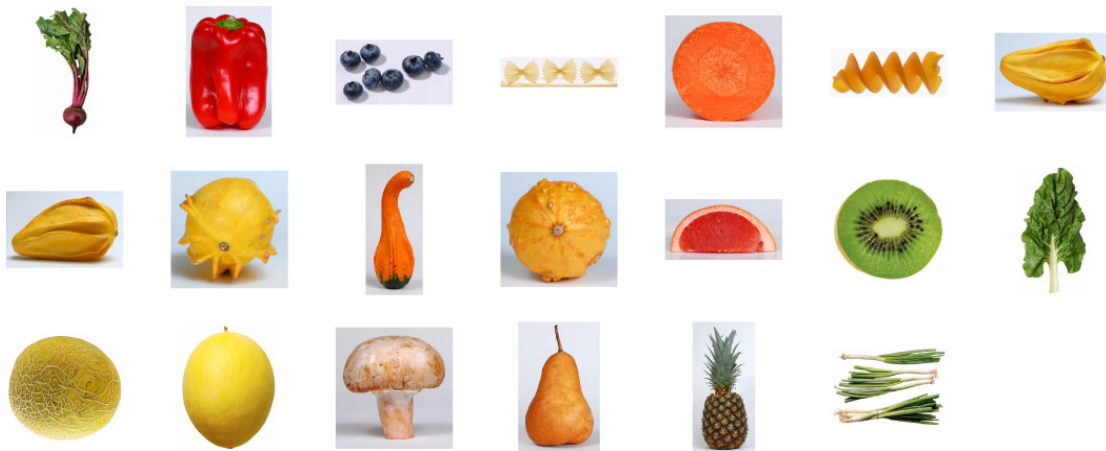


REASON: Image Manipulation often involves using traditional collage techniques of cut and paste to produce creative imagery. This beginning project will introduce you to the various selection tools in Photoshop—as well as layering, colorizing, shape transforming, cutting, pasting, duplicating visual elements, and file management.

GOAL: Create a collage illustration of a person or creature or landscape that combines the beginning ingredients in the 01_Veggie Parts folder, which are pictured below:



IDEA GUIDELINES:

- Collage should contain at least 8 of the original ingredients, but use as many as you like.
- Create one or more creatures using the veggie & fruit pieces you cut out.
- Add a simple environment for your character: a background or landscape or interior space.

COMPOSITION STEPS:

- Start with a New Photoshop file of 1500 by 2000 pixels, 240 ppi, with a white background.
- Open the *01_Veggie Parts* folder (available in the OUT folder, in my Faculty folder).
- Use the various selection tools (marquees, magic wand, & lassoes) to cut out the veggies.
- Use the Move tool to drag your cut shapes onto the NEW blank file—to begin assembling your collage.
- When you are finished building your creature, remember to Crop your final artwork.
- Save your layered .psd file for yourself in a safe location.
- Save your final art as a JPEG (Save As > .jpg) and put it in my faculty IN folder.

DUE: Beginning of class, Week 2. You'll be turning in a JPEG (.jpg) file.